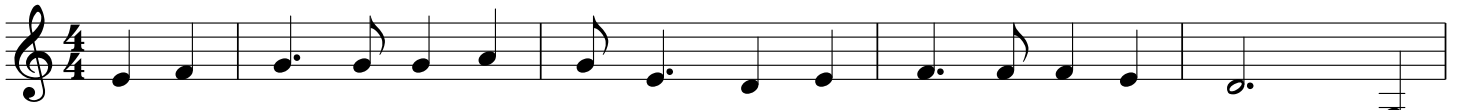


# Orphan Train

Bruce 'Utah' Phillips



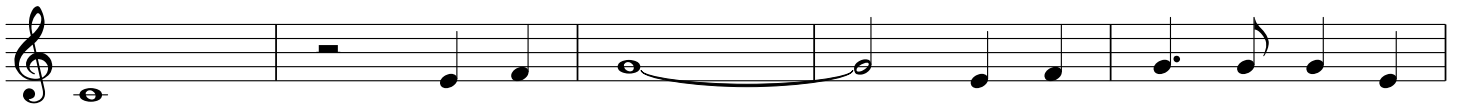
Once I had a dar-ling mo-ther, though I can't re-call her name I



had a ba-by bro-ther who I'll ne-ver see a - gain For the Child-ren's Home is



send-ing us out on the Or-phan Train To try to find some - one to take us



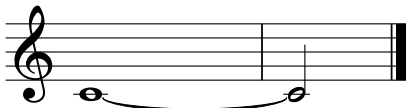
in Take us in, we have rode the Orp - han



Train Take us in, we need a home, we need a name Take us in,



oh won't you be our kin We are look-ing for some - one to take us



in